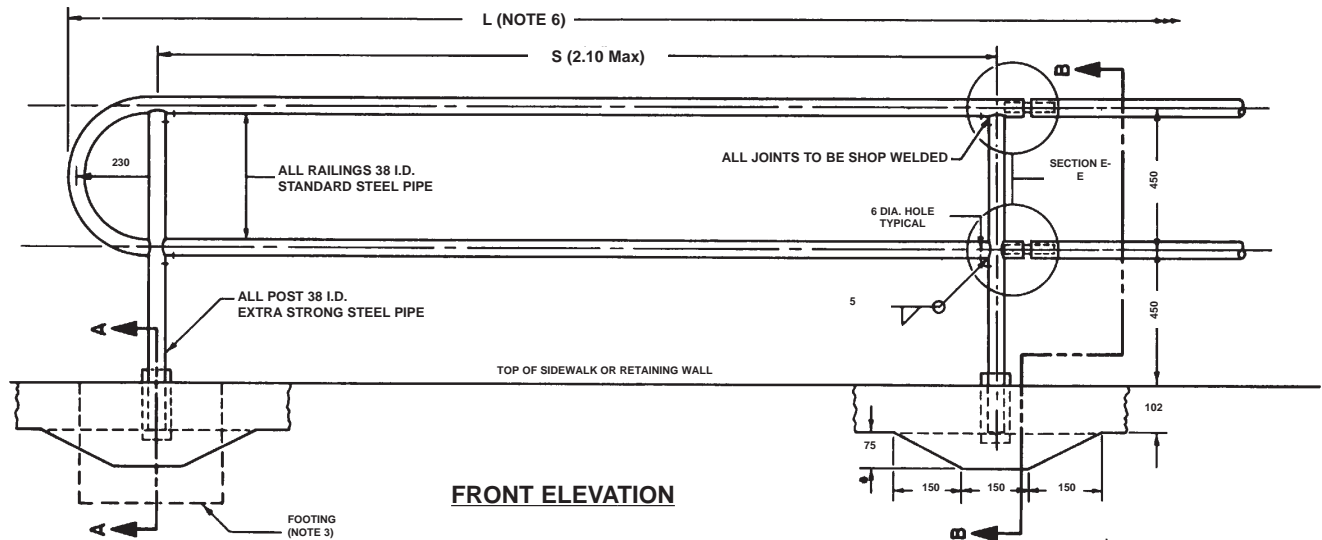


# PEDESTRIAN RAILING

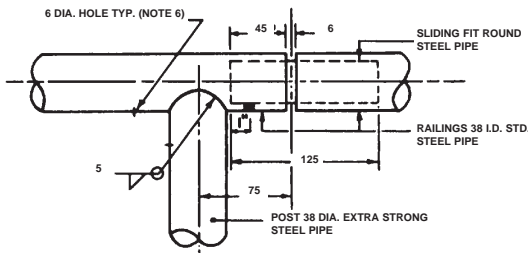
TYPE AMG 915



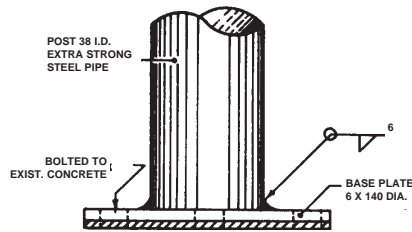
Metals Inc.



**FRONT ELEVATION**

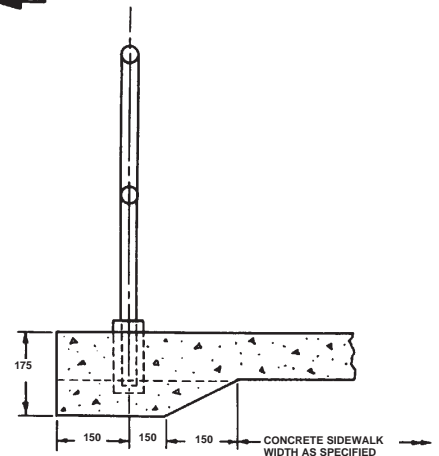


**TYPICAL JOINT DETAIL**

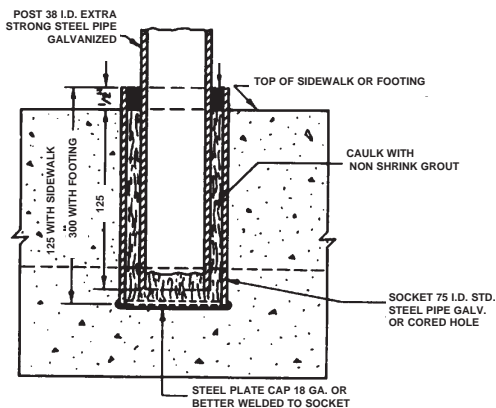


**BASE PLATE ELEVATION**

INSTALLATION DETAIL ON EXISTING CONCRETE



**SECTION B-B**



**SECTION A-A**

(ENLARGED)

**NOTES**

1. ALL CONCRETE WORK TO CONFORM TO SECTION 9-04 OF M.T.C. FORM 9. CLASS OF CONCRETE 20 MPa AFTER 28 DAYS.
2. HAND RAIL TO BE HOT DIPPED GALVANIZED AFTER FABRICATION IN CONFORMANCE WITH C.S.A. G164.
3. WHERE SIDEWALK IS NOT SPECIFIED, HAND RAIL POST TO BE SET IN CENTRE OF 300 X 300 X 300 DEEP CONCRETE FOOTINGS.
4. NUMBER OF PANELS =  $\frac{\text{TOTAL LENGTH (L)} - 600}{\text{OVER LENGTH OF PANELS (S)}}$
5. POST SHALL BE VERTICAL. ALL EXPOSED CORNERS TO BE GROUND SMOOTH.
6. 6 DIA. HOLES ARE TO PERMIT GASES TO ESCAPE DURING GALVANIZING.
7. WELD SHALL CONFORM TO THE LATEST ISSUE OF C.S.A. SPECIFICATION W59.
8. PIPE SHALL BE SUPPLIED IN ACCORDANCE WITH A.S.T.M. DESIGNATION A 120.