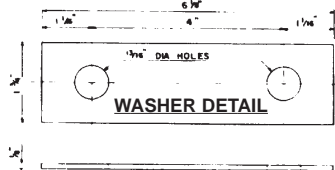
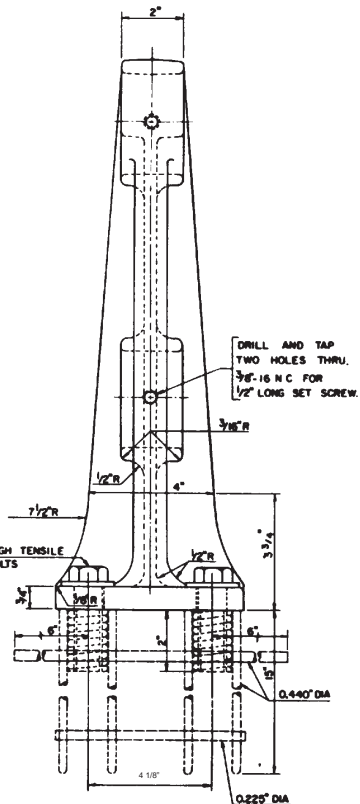
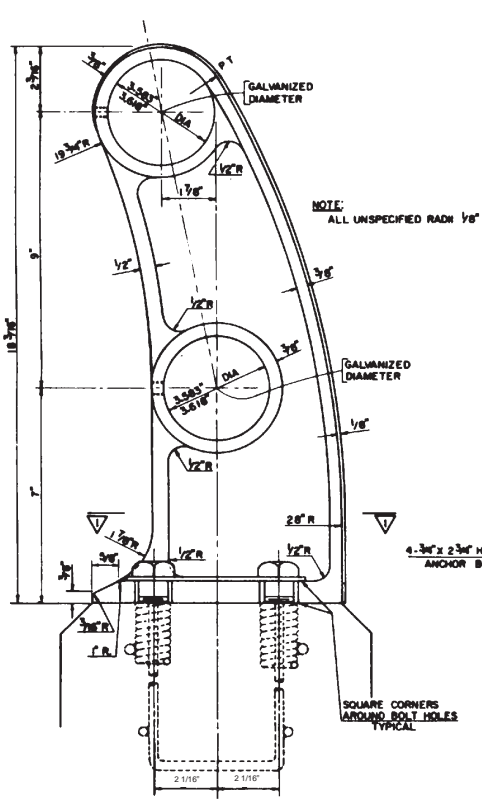
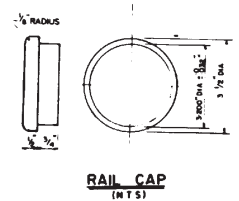
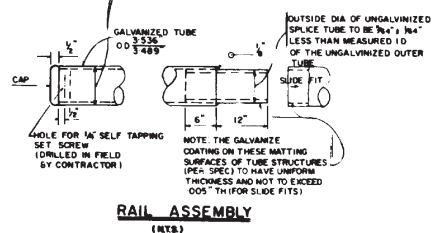
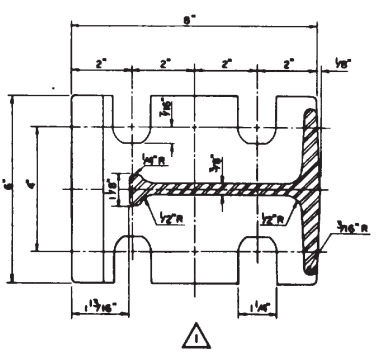
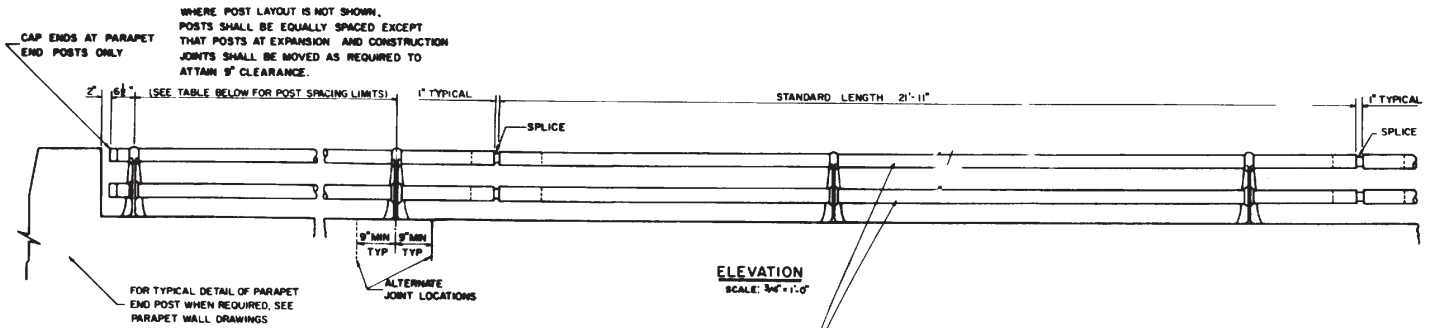


HIGHWAY RAILING

TYPE G-216



Metals Inc.



DISTANCE END TO END OF RAIL	POST SPACING	
	MINIMUM	MAXIMUM
UNDER 40'	9'-0"	12'-0"
OVER 40'	10'-0"	12'-0"

POST LAYOUT SHALL BE SYMMETRICAL ABOUT & BRIDGE SPAN

GENERAL NOTES:

- (1) RAIL ELEMENTS SHALL BE STRUCTURAL TUBING SUPPLIED IN ACCORDANCE WITH A S T M A 36
- (2) STEEL IN POSTS AND RAIL CAPS SHALL BE CAST STEEL SUPPLIED IN ACCORDANCE WITH A S T M A 27-60 GR 65-35
- (3) RAIL TUBING SHALL BE SUPPLIED WITH SPLICE IN LENGTHS OF 21'-11" (EXCLUDING SPLICE) EXCEPT AS NOTED.
- (4) POSTS, RAILS, WASHERS AND CAPS SHALL BE GALVANIZED IN ACCORDANCE WITH A S T M 123. SET SCREWS SHALL BE CADMIUM PLATED TO 0002 IN. WITH A SPECIAL BRIGHT DIP FINISH TO STD SPEC QQ-P-415A CLASS III. ALL GALVANIZING SHALL BE DONE AFTER FABRICATION.
- (5) ELECTRODES SHALL BE TO A LOW HYDROGEN SPECIFICATION E 7018, E 7018 or E 7018.
- (6) ANCHORAGE AND BOLTS SHALL BE AMG 4U OR EQUAL, MODIFIED AS SHOWN. INSERTS AND ANCHOR BOLTS SHALL BE IN ACCORDANCE WITH C S A STD G-164 FOR GALVANIZING. BOLTS SHALL BE GIVEN A LIBERAL COATING OF WHITE NON-STAINING GREASE.

ERECTION NOTES:

- (1) RAIL TUBING SHALL BE BENT TO FOLLOW ROAD CURVATURE.
- (2) RAIL POSTS SHALL BE SET PERPENDICULAR TO GRADE.
- (3) WHERE LAYOUT OF POSTS IS NOT SHOWN, POST LOCATION SHALL BE DETERMINED BY THE CONTRACTOR.
- (4) SET SCREWS SHALL NOT BE TIGHTENED ON POSTS ADJACENT TO EXPANSION JOINTS.
- (5) RAIL SHALL BE CUT AS REQUIRED WITH PIPE CUTTERS AND CUT SURFACE TREATED WITH ZINC RICH PAINT.
- (6) WHEN CONNECTING TO EXISTING RAIL, RAIL MUST BE MADE CONTINUOUS AND POST SPACING DETERMINED WITH REFERENCE TO EXISTING POST.

SIDE ELEVATION

FRONT ELEVATION