

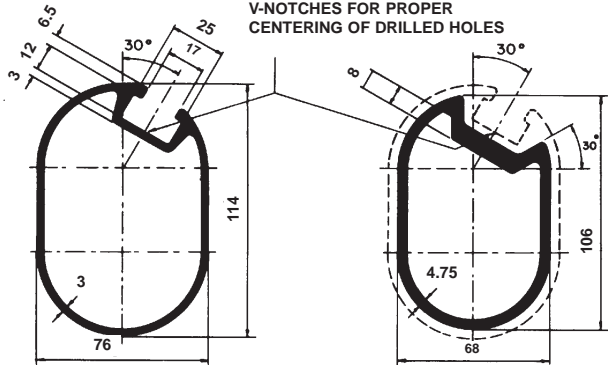
# HIGHWAY RAILINGS

PEDESTRIAN & TRAFFIC RAILS



## TRAFFIC RAIL AND INTERNAL SLEEVE

V-NOTCHES FOR PROPER CENTERING OF DRILLED HOLES

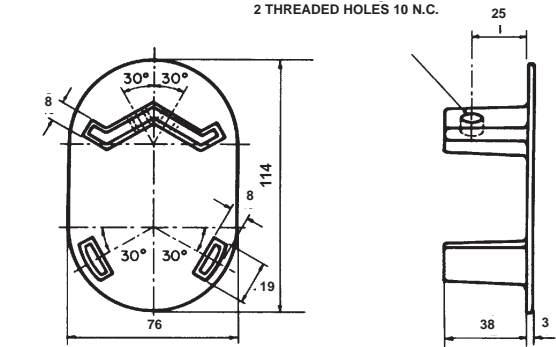


EXTRUSION (3.14 KG/M)  
ALLOY AA-6351-T6 OR 6061-T6

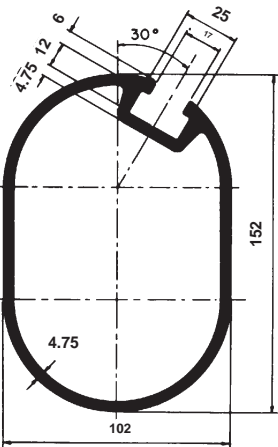
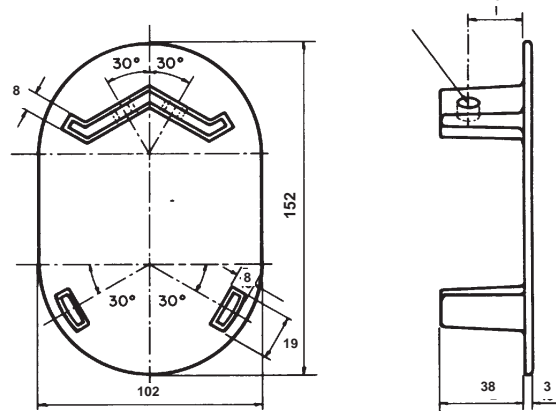
EXTRUSION (4 KG/M)  
ALLOY AA-6351-T6 OR 6061-T6

## RAIL PLUG FOR PEDESTRIAN RAIL

2 THREADED HOLES 10 N.C.



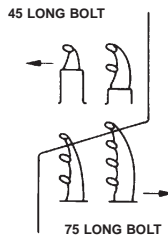
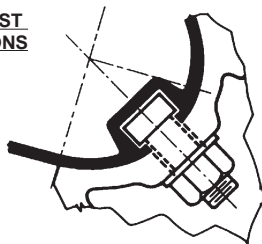
2 THREADED HOLES 10 N.C.



EXTRUSION (5.87 KG/M)  
ALLOY AA-6351-T6 OR 6061-T6

EXTRUSION (5.5 KG/M)  
ALLOY AA-6351-T6 OR 6061-T6

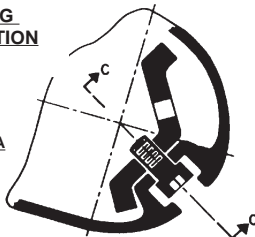
## RAIL-TO-POST CONNECTIONS



75 LONG BOLTS: SLIDE A 16 Ø SQ. - HEAD GALVANIZED STEEL BOLT OF THE LENGTH GIVEN IN THE ABOVE DIAGRAM INTO RAIL GROOVE AND SECURE TO POST BY WASHER AND HEX. NUT, ALSO GALV.

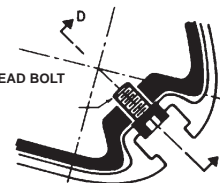
## RAIL PLUG CONNECTION

SECTION A-A

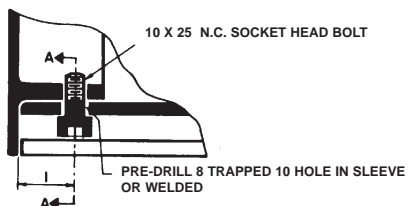


10 N.C. SOCKET HEAD BOLT

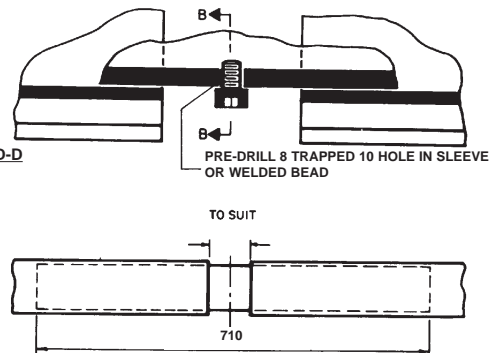
SECTION B-B



SECTION C-C



SECTION D-D



TO SUIT