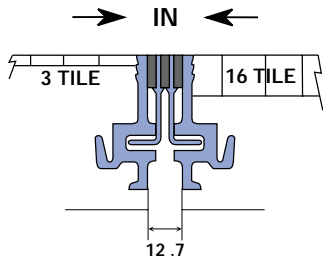
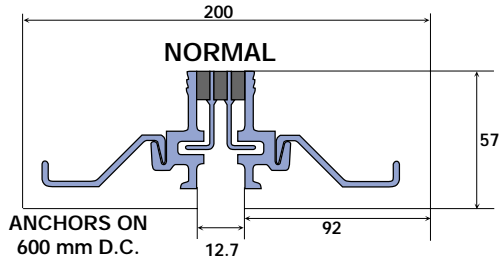


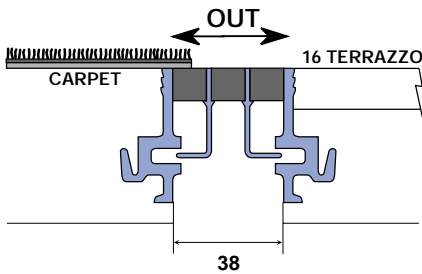
25mm FLOOR JOINTS



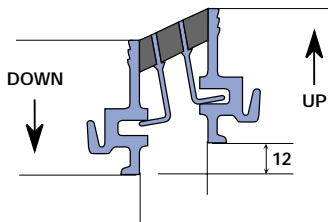
NFF FLAT FLOOR



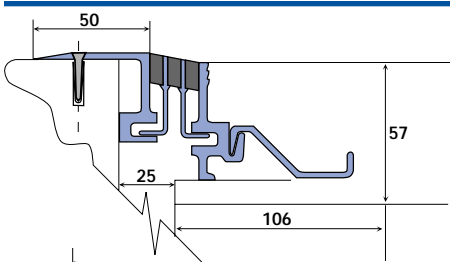
NFF FLAT FLOOR



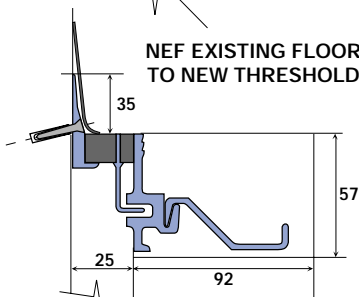
NFF FLAT FLOOR



NFF FLAT FLOOR



NEF EXISTING FLOOR
TO NEW THRESHOLD



NCF FLOOR TO WALL JOINT

25mm FLOOR EXPANSION JOINT CLOSURE SYSTEM

Level-Flex Floor and Wall Expansion Joint Closure System

AMG has developed the Level-Flex expansion joint closure to provide the building industry with a Canadian product offering features previously not available. By the use of non-metallic fillers which exhibit elastomeric properties, we now offer floor and wall expansion joint systems which retain a completely sealed surface and remain flat whether the point is extended or compressed as opposed to elastomeric joints which bulge up considerably under compression or become concave when extended.

Features of Level-Flex Joint Closures

The AMG N-series floor expansion joint closure offers the user these unique advantages:

- Completely sealed at surface against the ingress of moisture.
- Does not bulge up when compressed or draw down when extended but remains flat at all times.
- Supported by metal inserts in the filler thus removing the possibility of wear and deformation of the elastomeric material.
- Minimum Exposure of the closure makes it inconspicuous as possible.
- One All-Purpose Configuration; will accommodate terrazzo, vinyl tile, quarry tile and carpet.
- Closures are shipped assembled with the exception of anchors that are pressed into place, making installation quick, simple and accurate.
- No loose fastening hardware.
- The closure will flex +/- 50% in all directions with minimum tension or compression loads thus minimizing the potential of floor cracking adjacent to the joint.
- The Exposed surface is protected by tape to guard against construction damage and soiling.
- Aligns with wall closure.
- Unique requirements can be met by assembling standard members in various combinations not shown.
- Floor to Wall Closure can be covered by baseboard or left exposed.

Specification- Level-Flex Floor Closures

Furnish and install as indicated on drawing, N-series floor expansion joint closure Model No. as manufactured by AMG. Closures shall provide unrestricted movement in any direction; up to 50% of the nominal joint dimension. The flexible member is to remain flat and flush when compressed and is not to induce a tension load exceeding 7 kn/m per when extended 50% from nominal. All rigid members are made from aluminum alloy 6063 in natural finish and the flexible fill is medium grey in colour. All surfaces in contact with concrete shall be given one shop coat of zinc chromate primer.